

# UES

**UTILITY EQUIPMENT SERVICE, inc.**

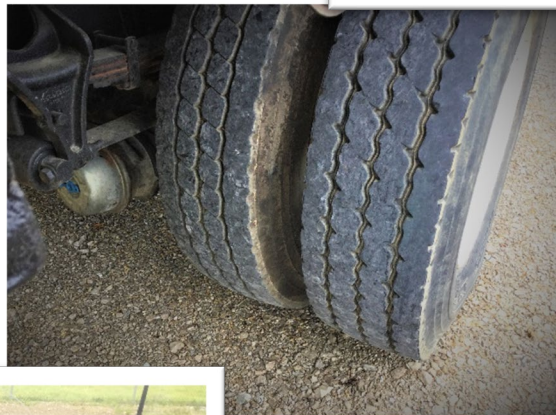


<b>Unit #1623</b>			
<b><u>Truck Specs</u></b>			
Year & Make:	2004 Ford F750 4X4	Make:	Lift-All
VIN#:	3FRXF75S64V657837	S/N:	7728020475LAN/HD
Engine Type:	CAT C7	Model:	LAN/HD-75-2E
Transmission:	6 Speed	Working Height:	80 Feet
Truck Hrs:	N/A	PTO Hrs:	5624
Tire Size:	Front:315/80/22.5 Rear: 11R22.5	Basket Configuration:	2 Man
Tire Condition:	60%	Tool Circuit:	Yes
Paint Color:	White	Outriggers:	4 Hydraulic
Front Axle:	13,200	Insulated Boom:	Yes
Rear Axle:	21,000	Jib/Material Handler:	No
Brakes:	Air	Winch:	No
GVWR:	33,000		
Mileage:	56,446		
Body Type:	Flatbed with Thrubox		
Accessories:	AM/FM; A/C; Cruise: Strobes		
<b>Notes:</b> <ul style="list-style-type: none"> <li>● Device Manual Provided</li> <li>● Lift Meets and/or Exceeds All ANSI Requirements and Truck D.O.T. Inspected</li> </ul>			

[www.lues.com](http://www.lues.com)  
 931-489-0900  
 4584 Tom Lunn Rd  
 Spring Hill, TN 37174

# UES

UTILITY EQUIPMENT SERVICE, inc.



[www.lues.com](http://www.lues.com)  
931-489-0900  
4584 Tom Lunn Rd  
Spring Hill, TN 37174