

UES

UTILITY EQUIPMENT SERVICE, inc.



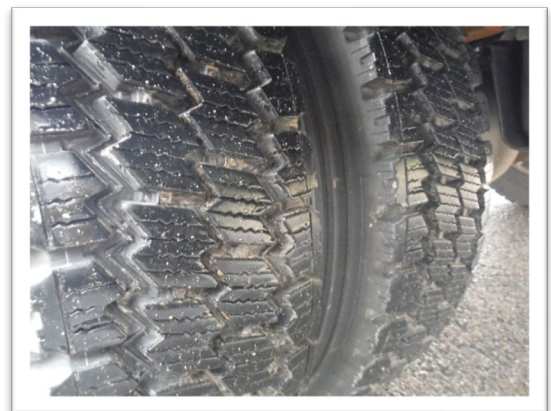
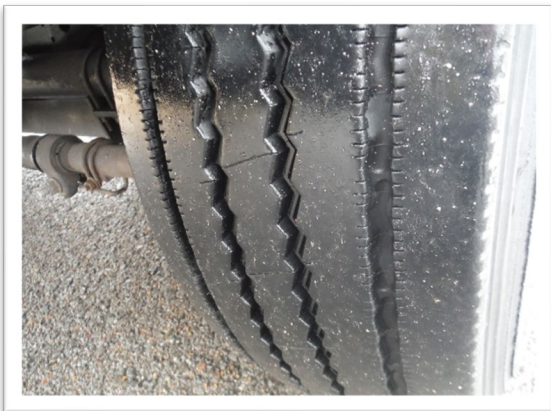
Unit #1599

Truck Specs			
Year & Make:	2011 Ford F-550	Make:	Altec
VIN#:	1FDUF5GTOBEB33503	S/N:	0111DE12601
Engine Type:	6.7 Powerstroke	Model:	AT37G
Transmission:	Automatic	Working Height:	42 Feet
Truck Hrs:	9951	PTO Hrs:	N/A
Tire Size:	225/70/19.5	Basket Configuration:	1 ½ man
Tire Condition:	75%	Tool Circuit:	Yes
Paint Color:	White	Outriggers:	2 Hydraulic
Front Axle:	6,500	Insulated Boom:	Yes
Rear Axle:	14,706	Jib/Material Handler:	No
Brakes:	Hydraulic	Winch:	No
GVWR:	19,500		
Mileage:	91,701		
Body Type:	Line/Utility		
Accessories:	AM/FM; A/C; Cruise; Backup Camera; Strobes; Pintlehook		
Notes:			
<ul style="list-style-type: none"> • Device Manual Provided • Lift Meets and/or Exceeds All ANSI Requirements and Truck D.O.T. Inspected 			

www.lues.com
 931-489-0900
 4584 Tom Lunn Rd
 Spring Hill, TN 37174

UES

UTILITY EQUIPMENT SERVICE, inc.



www.ues.com
931-489-0900
4584 Tom Lunn Rd
Spring Hill, TN 37174